

- [From the CEO's Desk](#)
- [Stay At](#)
- [Interesting Nepal](#)
- [Airline](#)
- [Destination](#)
- [Adventure](#)
- [Lifestyle](#)
- [Fairs & Festivals](#)
- [Impressions](#)

Bhaktapur, also known as Bhadgaon or Khwopa is an ancient Newar town in the eastern corner of the Kathmandu Valley. It is located in Bhaktapur District which comes under the Bagmati Zone.

### *From the CEO's Desk*

As part of promoting Nepal Tourism Year 2011 in London, the Embassy of Nepal and the Nepal Tourism Board together have started... [read more](#)

### *Stay At*

Adjoining the Shivapuri National Park from the north is a small village area known as Patiswara. It is here that the Shivapuri Village... [read more](#)

### *Interesting Nepal*

SNV, a non-profit international development organisation with headquarters in the Netherlands is supporting Ministry of Tourism and Civil Aviation... [read more](#)

### *Airline*

Air China is expected to start daily international flight between Lhasa in Tibet Autonomous Region and Kathmandu, Nepal from August 01, 2011... [read more](#)

### *Destination*

Located at 25 km North of Kathmandu City centre, Shivapuri is the second highest peak amongst the hills surrounding the Kathmandu Valley... [read more](#)

### *Adventure*

A Motorbike Tour is an interesting experience - the serpentine roads keep you wondering as to what is next, yet the metalled road condition... [read more](#)

### *Lifestyle*

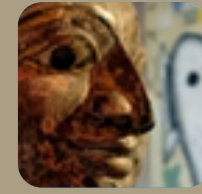
In a blender, process chopped onions, tomatoes, cumin powder, chilli, garlic, ginger, timur, turmeric, brown sugar and chopped cilantro into a smooth paste... [read more](#)

### *Fairs & Festivals*

Teej is a Hindu festival celebrated by women. Dancing, folk song and the red colour of women's wedding saris dominate the days of Teej... [read more](#)

### *Impressions*

I would like to thank you for flowers and the cake on my birthday, it was very sweet! Thank you very much. Our guide was the best, a great person... [read more](#)



- [From the CEO's Desk](#)
- [Stay At](#)
- [Interesting Nepal](#)
- [Airline](#)
- [Destination](#)
- [Adventure](#)
- [Lifestyle](#)
- [Fairs & Festivals](#)
- [Impressions](#)



## From the CEO's Desk



Dear Partners,

As part of promoting Nepal Tourism Year 2011 in London, the Embassy of Nepal and the Nepal Tourism Board together have started a publicity campaign by placing advertisements on city buses.

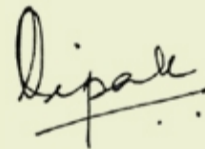
Adverts have been placed on thirteen buses covering 21 major inter-city routes across London. The three-week promotional campaign aims to cover key central London locations at all times ensuring that the campaign is always in busy, high populated areas reaching a large number of shoppers and commuters.

In the first four months of the current year, Nepal welcomed 12,747 British visitors who came by air, up by 23 percent compared to the same period last year.

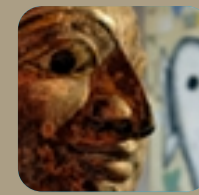
Come explore with us.

Happy Reading.

Regards,



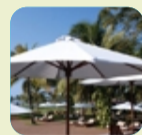
Dipak Deva



- [From the CEO's Desk](#)
- [Stay At](#)
- [Interesting Nepal](#)
- [Airline](#)
- [Destination](#)
- [Adventure](#)
- [Lifestyle](#)
- [Fairs & Festivals](#)
- [Impressions](#)



## Stay At

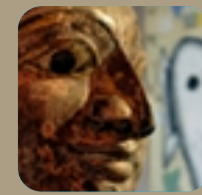


### *Shivapuri Eco Village Resort*

Adjoining the Shivapuri National Park from the north is a small village area known as Patiswara. It is here that the Shivapuri Village Eco-Tourism and Conservation Farm Resort (Shivapuri Village) is located. The Resort has breathtaking views of the majestic Himalayas, the lush greenery of the park forest and a sense of remoteness; even while being so close to the capital.

The main objective and concept that Shivapuri Village has nurtured up until now is a sustainable tourism industry through quality services, conservation efforts at all levels to provide a correct definition for "Eco-Tourism".

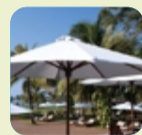
Shivapuri Village has been able to project itself as a popular tourist destination. The majestic view of the Himalayas, the golden sun sets and breathtaking tours conducted to the local ethnic village nearby offer ample opportunity to explore the land and its people well. It is a rare experience. The food available at Shivapuri Village is based on Nepalese home cooking which is served in a typical village atmosphere with genuine Nepalese hospitality.



- [From the CEO's Desk](#)
- [Stay At](#)
- [Interesting Nepal](#)
- [Airline](#)
- [Destination](#)
- [Adventure](#)
- [Lifestyle](#)
- [Fairs & Festivals](#)
- [Impressions](#)



## Interesting Nepal

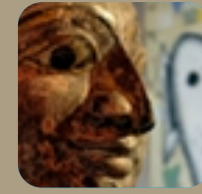


### *The Great Himalaya Trail Development Programme (GHTDP) Launched in Solukhumbu*

SNV, a non-profit international development organisation with headquarters in the Netherlands is supporting Ministry of Tourism and Civil Aviation, Nepal Tourism Board, the Trekking Agencies' Association of Nepal and other stakeholders to implement the Great Himalaya Trail Development Programme (GHTDP) in Dolpo, Gorkha, Humla, Solukhumbu and Taplejung.

The programme is expected to accelerate tourism development in these areas by providing vocational training to local communities and offering support for local businesses to stimulate job creation and income generating as well as infrastructure development along with improved health services for local people throughout the tourism sector.

The Great Himalaya Trail Development Programme was launched in the Solukhumbu district on the occasion of International Sagarmatha (Everest) Day and Solukhumbu Tourism Festival 2011.



- From the CEO's Desk
- Stay At
- Interesting Nepal
- Airline
- Destination
- Adventure
- Lifestyle
- Fairs & Festivals
- Impressions



## Airline

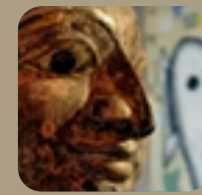


### *Air China to operate daily flights from Lhasa – Kathmandu*

Air China is expected to start daily international flight between Lhasa in Tibet Autonomous Region and Kathmandu, Nepal from August 01, 2011.

Air China, the country's flagship carrier, adjusted its service plan by increasing from four flights per week to daily service based on the preferences of previous passengers surveyed and predictions in this year's tourism market.

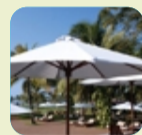
Air China initiated the Lhasa-Kathmandu route in 1987. It currently provides services every Tuesday, Thursday, Saturday and Sunday. The flight duration is one hour and ten minutes.



- [From the CEO's Desk](#)
- [Stay At](#)
- [Interesting Nepal](#)
- [Airline](#)
- [Destination](#)
- [Adventure](#)
- [Lifestyle](#)
- [Fairs & Festivals](#)
- [Impressions](#)



## Destination



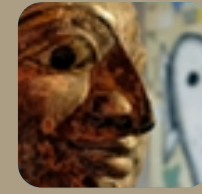
### *Shivapuri National Park*

Located at 25 km North of Kathmandu City centre, Shivapuri is the second highest peak amongst the hills surrounding the Kathmandu Valley. It is 2732m high at its peak with numerous sharp ridges radiating to all sides. Due to its strategic location and convenience, Shivapuri was proclaimed as a watershed area supplying more than a million liters of natural spring water to the city.

The vegetation consists of a variety of natural forest types, depending on altitude and aspects. Most of the areas below 1800m are covered with Schima castanopsis forest in which pines appear on the southern dry ridges, with Uti along the streams. A forest of oak species mixed with rhododendron and a variety of orchids flourish on the northern slopes.

Among the wild animals, Sloth Bear, Leopard, Muntjac, Pallas's Cat, Large Indian Civet, Himalayan Yellow Throated Marten, Pangolin, Wild Boar, Goral, Porcupine and Common Langur etc. can be spotted around the park.

Shivapuri National Park is a home to 177 species of birds of which 9 are enlisted as endangered, 19 species of mammals and 150 species of butterflies some endemic and rare. This is, out of the total of 800 species of birds, 130 species of mammals and 600 species of butterflies found in Nepal, thus making Shivapuri a paradise for flora and fauna and one of the two National Parks situated in the capital around the world.



- From the CEO's Desk
- Stay At
- Interesting Nepal
- Airline
- Destination
- Adventure
- Lifestyle
- Fairs & Festivals
- Impressions



## Adventure

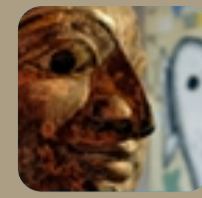


### *Motor Bike Tour*

A Motorbike Tour is an interesting experience - the serpentine roads keep you wondering as to what is next, yet the metalled road condition keep the bike moving at a regular pace with the cold breeze of the spring and autumn season making for a good relaxation adventure activity.

This tour is meant for people looking for an insight into the rural life of Nepal. It provides a great view of the evergreen forests of the Lower Himalayas, beautiful temples and monasteries. The tour takes one to all the three lower zones of Nepal, highlighting the life and culture of Nepal.

One is most likely to embark on this tour with the rugged beauty of the Honda XR250 or the XL250R motorcycles.



- [From the CEO's Desk](#)
- [Stay At](#)
- [Interesting Nepal](#)
- [Airline](#)
- [Destination](#)
- [Adventure](#)
- [Lifestyle](#)
- [Fairs & Festivals](#)
- [Impressions](#)



## Lifestyle



### *Lamb Pakuwa -Slow-Cooked Dry Lamb Curry*

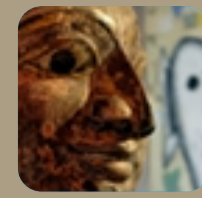
#### Ingredients

- 2 lbs. boneless lamb, cut into 1-in. cubes
- 1 cup onion, chopped
- ½ cup tomatoes, chopped
- 1 teaspoon cumin powder
- 1 tablespoon chilli paste
- 1 tablespoon garlic, minced
- 1 tablespoon ginger, minced
- ¼ teaspoon timur (Szechwan pepper)
- 1 teaspoon turmeric
- 1 tablespoon brown sugar
- 2 tablespoons cilantro, chopped
- 5 dried red chillies
- 1 teaspoon cumin seeds
- 1 cup broth or water
- 5 tablespoons cooking oil
- Salt and Pepper
- 1 cup chopped scallions

#### Directions

In a blender, process chopped onions, tomatoes, cumin powder, chilli, garlic, ginger, timur, turmeric, brown sugar and chopped cilantro into a smooth paste. Combine lamb cubes with the marinating paste and marinate for at least four hours. In a saucepan, heat three tablespoons of oil; add the marinated lamb pieces together with the marinade. Cook covered in low heat, frequently stirring, until the lamb is tender and all liquid has evaporated. The key is to ensure that the curry is cooked tender and completely dry at this stage. Reserve in a large plate.

In a pan, heat the remaining two tablespoons of oil. Add dried red chillies and cumin seeds; fry until dark. To the oil mixture add chopped scallions and fry for a minute or so. To the oil mixture add the curried lamb and let it turn brown. Serve with rice pilaf or flat bread.



- From the CEO's Desk
- Stay At
- Interesting Nepal
- Airline
- Destination
- Adventure
- Lifestyle
- Fairs & Festivals
- Impressions

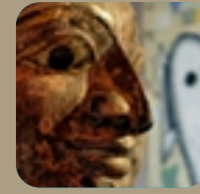


## Fairs and Festivals



### *Haritalika Teej* *31 August 2011*

Teej is a Hindu festival celebrated by women. Dancing, folk song and the red colour of women's wedding saris dominate the days of Teej. Women keep a fast and visit the temple, where married ones pray for a happy life and unmarried ones pray for a good husband.



- From the CEO's Desk
- Stay At
- Interesting Nepal
- Airline
- Destination
- Adventure
- Lifestyle
- Fairs & Festivals
- Impressions



## Impressions



Dear Suraj,

I would like to thank you for flowers and the cake on my birthday, it was very sweet! Thank you very much. Our guide was the best, a great person, very professional; a gentleman that loves his country and makes us love it also.

Congratulations to you and to Nepal, an amazing, spiritual, magical, beautiful country that for sure deserves more than a two day visit!!

Namaste

Ms. Carmo Ponoa  
Portugal