



- [From the CEO's Desk](#)
- [Stay At](#)
- [Airlines](#)
- [Interesting](#)
- [Tourism Update](#)
- [Adventure](#)
- [Recipe of the Month](#)
- [Destination](#)
- [Tourism Events](#)
- [Fairs and Festivals](#)
- [Impressions](#)

Situated among pristine forests of pine, rhododendron and apple trees, Dwarika's Himalayan Shangri-La Village Resort is a scenic journey of 45 minutes from Kathmandu and half hour from Dhulikhel city.

### *From the CEO's Desk*

It's official now! The year-long mega campaign to hoist Nepal on the world tourism map in the most ambitious manner till date, Nepal Tourism Year 2011... [read more](#)

### *Stay At*

Situated among pristine forests of pine, rhododendron and apple trees, Dwarika's Himalayan Shangri-La Village Resort is a scenic journey of 45 minutes from Kathmandu... [read more](#)

### *Airlines*

Buddha Air, a leading domestic airline company, has added an ATR 72-500 aircraft to its fleet. The new aircraft landed at the Tribhuvan International Airport from Abu Dhabi... [read more](#)

### *Interesting*

Every year in Pokhara, stakeholders have been organizing a clean-up campaign on Fewa Lake to great rid of the fast spreading water plant. It had already covered... [read more](#)

### *Tourism Update*

A private transportation company has been plying passenger buses along the Pokhara-New Delhi highway ferrying tourists and Nepalese between the two Nepalese... [read more](#)

### *Adventure*

Not only does Nepal offer glorious mountain trekking and raging river rafting but it also has a fine selection of pristine national parks. A Jungle Safari in Nepal can be... [read more](#)

### *Recipe of the Month*

Mushroom Curry - Chaiu Ko Tarkari... [read more](#)

### *Destination*

A 45-minute drive from Kathmandu to Dhulikhel offers the best view of the north-eastern Himalayas. Dhulikhel is situated at the foothills of the Panchkhal valley... [read more](#)

### *Tourism Events*

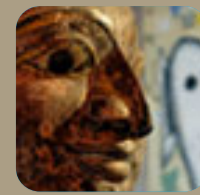
The year-long mega campaign of Nepal Tourism Year 2011 (NTY) will be launched on January 14, 2011. The committee will be inviting 22 tourism ministers... [read more](#)

### *Fairs and Festivals*

The festival of "Gai Jatra", the procession of cows, is generally celebrated in the Nepalese month of Bhadra (August-September). The festival of cows is one of the most... [read more](#)

### *Impressions*

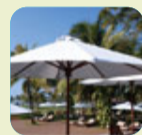
I am very impressed with Nepal. Will come back definitely... [read more](#)



- [From the CEO's Desk](#)
- [Stay At](#)
- [Airlines](#)
- [Interesting](#)
- [Tourism Update](#)
- [Adventure](#)
- [Recipe of the Month](#)
- [Destination](#)
- [Tourism Events](#)
- [Fairs and Festivals](#)
- [Impressions](#)



## From the CEO's Desk



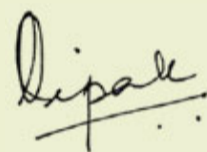
Dear Partners,

It's official now! The year-long mega campaign to hoist Nepal on the world tourism map in the most ambitious manner till date, Nepal Tourism Year 2011 will be launched on January 14, 2011.

The country is working together to make Nepal Tourism Year 2011 a grand success and we look forward to your continuous support and cooperation as well.

See you soon

Regards,



Dipak Deva



- [From the CEO's Desk](#)
- [Stay At](#)
- [Airlines](#)
- [Interesting](#)
- [Tourism Update](#)
- [Adventure](#)
- [Recipe of the Month](#)
- [Destination](#)
- [Tourism Events](#)
- [Fairs and Festivals](#)
- [Impressions](#)



## Stay at



### *Dwarika's Himalayan Shangri-la*

Situated among pristine forests of pine, rhododendron and apple trees, Dwarika's Himalayan Shangri-La Village Resort is a scenic journey of 45 minutes from Kathmandu and half hour from Dhulikhel city. Naturally confined at an altitude of 1700 meters, the resort endows you with the freedom of a 180-degree view of the mighty Himalayas, the Kavrepalanchok valley below and the most amazing sunrise and sunset. The resort spread over 20 acres of gentle slopes has its own forest, cascade pool and a host of species of birds, butterflies and even some deer.

Designed and built to depict ethnic "Newari" and "Gurung" building styles of Nepal, the rooms do not come with a television since the view from the room views is mesmerising enough. It is like having your own 150 inch plasma television, and it's constantly playing the nature show, live, right in your room.

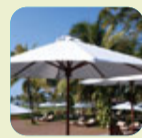
The Village Resort accommodation has been designed and built to depict various ethnic building styles of Nepal, currently having thirty six rooms with all modern amenities. The rooms are uncluttered and stylish with traditional soft furnishings and decorative items; wooden flooring with throw rugs on the floors. Each room has its own garden space with hammocks and lounge chairs. The bathrooms are offer no bathtubs but rather an outdoor feeling shower stall, where one can continue to admire nature.



- [From the CEO's Desk](#)
- [Stay At](#)
- [Airlines](#)
- [Interesting](#)
- [Tourism Update](#)
- [Adventure](#)
- [Recipe of the Month](#)
- [Destination](#)
- [Tourism Events](#)
- [Fairs and Festivals](#)
- [Impressions](#)



## Airlines



### *Buddha Air adds ATR 72 to its fleet*

Buddha Air, a leading domestic airline company, has added an ATR 72-500 aircraft to its fleet. The new aircraft landed at the Tribhuvan International Airport from Abu Dhabi to Kathmandu via Ahmedabad in India.

The ATR 72 is a twin-turboprop built by French-Italian aircraft manufacturer ATR and seats up to 70 passengers in a single-class configuration. With the arrival of the ATR 72, Buddha Air has a fleet of nine aircrafts now.. The airline plans to add one more ATR 72 next year.

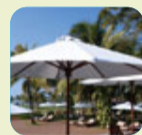
Buddha Air that has recently spread its wings to Paro, Bhutan and will start its international operations by launching a flight from Kathmandu to Patna, Lucknow and Kolkata in India by September.



- [From the CEO's Desk](#)
- [Stay At](#)
- [Airlines](#)
- [Interesting](#)
- [Tourism Update](#)
- [Adventure](#)
- [Recipe of the Month](#)
- [Destination](#)
- [Tourism Events](#)
- [Fairs and Festivals](#)
- [Impressions](#)



## Interesting



### *Clean-up campaign in Fewa Lake*

Every year in Pokhara, stakeholders have been organizing a clean-up campaign on Fewa Lake to get rid of the fast spreading water plant. It had already covered almost half of the lake this time. Local administration organized a massive campaign in the first week of June to get rid of water hyacinth that has infested Fewa Lake, one of the major tourist attractions in Kaski district.

### *Fishtail Air's Air Ambulance*

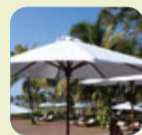
To save more lives at risk, Fishtail Air has introduced ambulance facilities in its helicopters. The air ambulance has medical facilities and equipments supplied by Air Zermatt which can be fitted or detached in minutes. This service will benefit not only injured mountaineers but also patients from far- flung areas in need of emergency medical care.



- [From the CEO's Desk](#)
- [Stay At](#)
- [Airlines](#)
- [Interesting](#)
- [Tourism Update](#)
- [Adventure](#)
- [Recipe of the Month](#)
- [Destination](#)
- [Tourism Events](#)
- [Fairs and Festivals](#)
- [Impressions](#)



## Tourism Update



### *Direct bus service linking Pokhara-New Delhi*

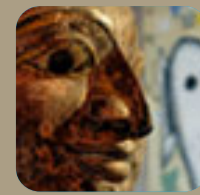
A private transportation company has been plying passenger buses along the Pokhara-New Delhi highway ferrying tourists and Nepalese between the two Nepalese and Indian cities of Pokhara and New Delhi. Presently the bus service runs for three days a week but taking into consideration NTY 2011 and the increased frequency of tourist arrivals, the company has decided to ply its buses 6 days a week from mid-July. Though most of the passengers are Nepalese and Indian tourists, tourists from Japan, America, England, and Israel have also been found favouring this direct bus service.

### *New Trekking Trail in Gorkha*

In order to make the Nepal Tourism year 2011 a grand success, tourism entrepreneurs and officials are busy building up infrastructure and planning new tours and packages for tourists. For the trekkers a new route to explore some of the least explored places, Gorkha Tourism Board in collaboration with Nepal Tourism Board (NTB) is working to establish a new trekking route from Manakamana to Gorkha. Gorkha was the royal seat of the erstwhile Shah dynasty, which ruled Nepal till 2008.

The trail, covering a distance of 25 km from Manakamana to Gorkha winds through traditional Magar villages, historical and religious sites and dense forests filled with Himalayan flora and fauna. The Board will be introducing two packages for the trail: a two nights/three days package and a three nights-four days package.

The Gorkha Tourism Board is also planning to revive the ancient Lig Lig Kot race during Chaite Dassein festival (celebrated in March/April). The race will be open to locals and visitors alike and the winner will be declared the tourism ambassador of Gorkha. According to legend it was by winning in this particular race in the 14th century, that Dravya Shah became the king of Gorkha. However, after his win, he discontinued this race and started the reign of Shah dynasty in Gorkha.



- [From the CEO's Desk](#)
- [Stay At](#)
- [Airlines](#)
- [Interesting](#)
- [Tourism Update](#)
- [Adventure](#)
- [Recipe of the Month](#)
- [Destination](#)
- [Tourism Events](#)
- [Fairs and Festivals](#)
- [Impressions](#)



## Adventure



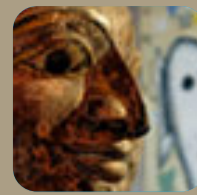
### *Nepal Jungle Safari*

Not only does Nepal offer glorious mountain trekking and raging river rafting but it also has a fine selection of pristine national parks. A Jungle Safari in Nepal can be a very exciting experience. You can trek into the jungle by foot with an experienced tracker, by elephant back, by dugout canoe or by jeep. A safari in Nepal is a fun filled package ideal for anyone. The national parks offer a range of accommodations from lush resorts to basic tent style. The resorts make a package for you that includes everything from sleeping arrangements to meals to days full of activity.

Jungle walks bestow a close-up to analysis different categories of animals as well observe their track, sign and sounds. The most gripping and attention-grabbing program offered by Nepal not found elsewhere in the world is the jungle safari. In Nepal you will discover the ideal location to view the jungle scenery, birds and animals and the indigenous local people, their colourful tradition, unique attire and languages.

Nepal attracts visitors from all over the world for jungle safari in the Terai region. In fact, a visit to the jungle involves game-stalking by a variety of means-: foot, dugout, canoe, jeep, elephant back etc. Far beyond one's imagination, jungle safari in Nepal offers one of the finest experiences and opportunities to see a variety of wildlife, flora and fauna. Going on a jungle safari is a great way to relax after trekking, any time of the year except the monsoon season.

There are four main places in Nepal which have jungle safari lodges and facilities for tourists : Royal Chitwan National park, Baradia National park, Rara Jungle safari park and the Koshi Tappu jungle safari park.



- [From the CEO's Desk](#)
- [Stay At](#)
- [Airlines](#)
- [Interesting](#)
- [Tourism Update](#)
- [Adventure](#)
- [Recipe of the Month](#)
- [Destination](#)
- [Tourism Events](#)
- [Fairs and Festivals](#)
- [Impressions](#)



## Recipe of the Month



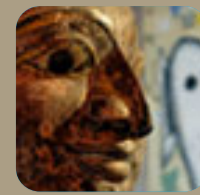
### *Mushroom Curry -Chaiu Ko Tarkari*

#### Ingredients

- 1 lb mushroom
- 1 onion (chopped)
- 1 tomatoes (chopped)
- 1 teaspoon vegetable oil
- 1 teaspoon garlic
- Pinch of hot pepper, turmeric salt to taste

#### Preparation

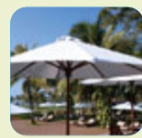
- 1 Heat the oil, add spices and garlic
- 2 Sauté onions till slight golden brown and then add tomatoes. Stir for a while.
- 3 Add mushroom cut in slices.
- 4 When mushrooms are half done add water and cook for a while.
- 5 Serve hot with rice or bread



- [From the CEO's Desk](#)
- [Stay At](#)
- [Airlines](#)
- [Interesting](#)
- [Tourism Update](#)
- [Adventure](#)
- [Recipe of the Month](#)
- [Destination](#)
- [Tourism Events](#)
- [Fairs and Festivals](#)
- [Impressions](#)



## Destination



### *Dhulikhel*

A 45-minute drive from Kathmandu to Dhulikhel offers the best view of the north-eastern Himalayas. Dhulikhel is situated at the foothills of the Panchkhal valley, about 21 miles east of Kathmandu on the Chinese built Arniko Highway which leads to Tibet. On the way one passes Banepa, another former medieval city-kingdom that once boasted of diplomatic relations with China's Ming dynasty. Old Dhulikhel is a close traditional Newar settlement of remarkable architectural consistency with its four to five-story brick mansions built in an almost Victorian style.

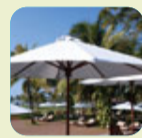
Newari woodcraft is also kept alive at Dhulikhel's resorts such as the Dhulikhel Mountain Resort and Himalayan Horizon. Both incorporate the traditional style of architecture along with modern amenities. The Dhulikhel resorts all offer panoramic vistas of the snow-capped central Himalayas in contrast to the temperate and lush valley below. Dhulikhel is also a good base for a number of excursions. Most popular is the all-day hike leading to the sacred Buddhist pilgrimage site of Namo Buddha. For centuries Namo Buddha has drawn pilgrims to the sacred spot where, according to legend, Lord Buddha is said to have sacrificed his own flesh to feed a starving tigress and her cubs. A carved stone slab depicts this Buddhist tale of selfless compassion and sacrifice.



- [From the CEO's Desk](#)
- [Stay At](#)
- [Airlines](#)
- [Interesting](#)
- [Tourism Update](#)
- [Adventure](#)
- [Recipe of the Month](#)
- [Destination](#)
- [Tourism Events](#)
- [Fairs and Festivals](#)
- [Impressions](#)



## Tourism Events



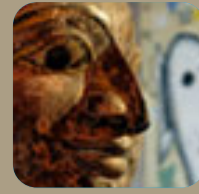
### *NTY 2011 to begin from Jan 14*

The year-long mega campaign of Nepal Tourism Year 2011 (NTY) will be launched on January 14, 2011.

The committee will be inviting 22 tourism ministers from different Asian countries for the inaugural ceremony, which is expected to showcase Nepal's beautiful culture and traditions apart from its famed natural beauty. And, the campaign will carry a unifying message — Together for Tourism.

Working towards a target to attract 3 lakh Indian tourists, the committee will organise a series of promotional programmes along the Indian borders in October-November.

In order to facilitate visitor movement not only for NTY 2011 but also for the future, Nepal Tourism Board (NTB) with the help of private sector will develop necessary infrastructure to provide a single-window mechanism for immigration, customs, and transportation formalities for the visitors at different entry points along the Indo-Nepal border. With a view to intensifying tourist activities along the border, food courts, handicraft shops and other tourism-related attractions would be created in these bordering areas.



- [From the CEO's Desk](#)
- [Stay At](#)
- [Airlines](#)
- [Interesting](#)
- [Tourism Update](#)
- [Adventure](#)
- [Recipe of the Month](#)
- [Destination](#)
- [Tourism Events](#)
- [Fairs and Festivals](#)
- [Impressions](#)



## Fairs and Festivals



### *Gai Jatra*

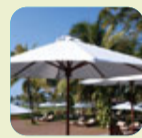
The festival of "Gai Jatra", the procession of cows, is generally celebrated in the Nepalese month of Bhadra (August-September). The festival of cows is one of the most popular festivals in Nepal. The whole complex of Gai Jatra festival has its roots in the ancient age when people feared and worshipped Yamaraj, "the god of death". However, the ironical sessions synonymous with the Gai Jatra festival came into tradition in the medieval period of Nepal during the reign of Malla Kings. Hence, the present form of Gai Jatra is a happy blending of antiquity and medievalism.



- [From the CEO's Desk](#)
- [Stay At](#)
- [Airlines](#)
- [Interesting](#)
- [Tourism Update](#)
- [Adventure](#)
- [Recipe of the Month](#)
- [Destination](#)
- [Tourism Events](#)
- [Fairs and Festivals](#)
- [Impressions](#)



## Impression



Dear All,

I am very impressed with Nepal. Will come back definitely.

And hope that will help increase Russian tourist to this beautiful country.

Thank you very much.

Regards,  
Galina Zadikyan  
Megapolus Tours